

Dawson Butte Open Space Trail Ride

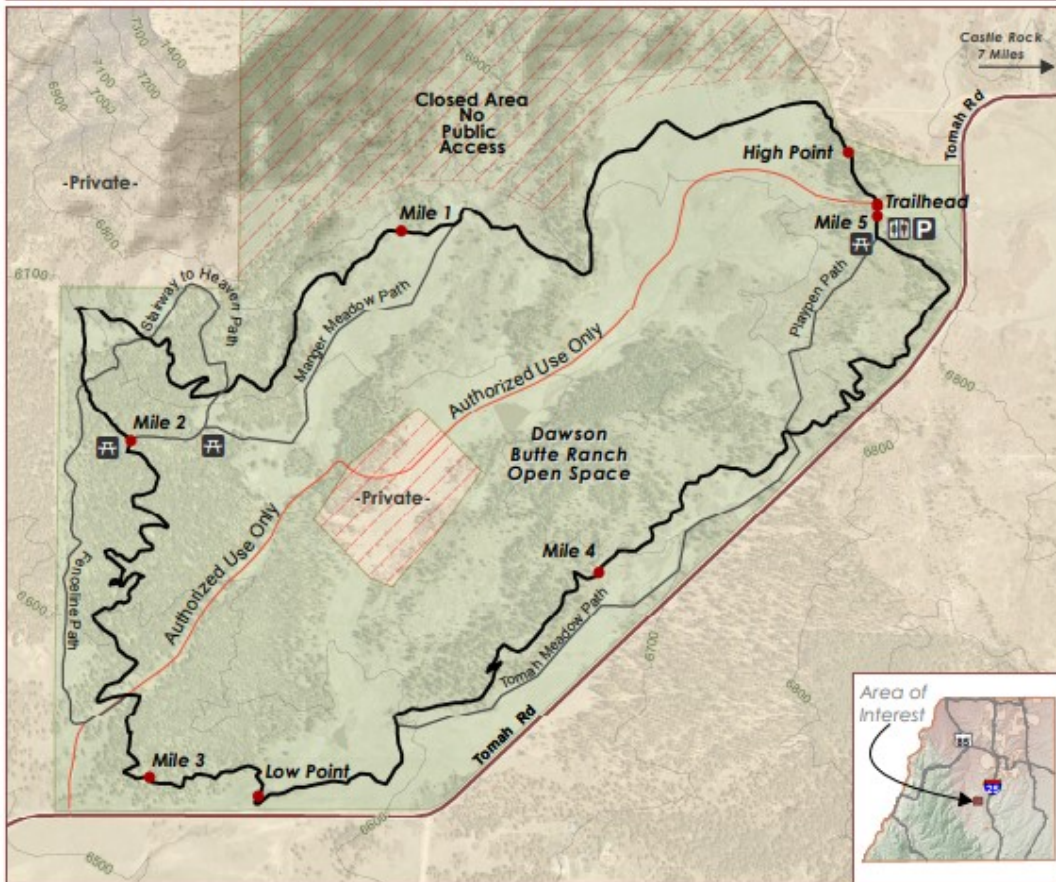
1753 Tomah Road, Castle Rock, CO 80109

Ready to ride at 10:00



Douglas County Division of Open Space and Natural Resources
100 Third Street, Castle Rock, CO 80104 (303-660-7495)
www.douglas.co.us/openspace

Dawson Butte Ranch Open Space Trail



Trail Uses

This property is open from 1 hour before sunrise to 1 hour after sunset

- Hiking
- Horseback Riding
- Mountain Biking
- Pets On Leash
- Cross Country Skiing
- Snowshoeing
- No Motorized Vehicles

General Information

The Dawson Butte Trail winds 5 miles through gently rolling terrain. The area is mostly forested areas with some open meadow and views of the Front Range mountains. Optional bridle paths include over 60 horse jumps.

Respect Wildlife

Elk, bears, mountain lions, and many other wildlife species call this land home.

Directions

1753 Tomah Road, Castle Rock
From I-25, take the Plum Creek Exit west and head south five miles on the frontage road; go right/west at Tomah Rd. 1.5 miles to the Dawson Butte Ranch entrance on the right.

- Dawson Butte Ranch Boundary
- Private Property
- Closed Area
- Dawson Butte Ranch Trail
- Bridle Paths
- 100 Foot Contour
- Roads
- Private Road
- Profile Points

Dawson Butte Ranch Trail - Profile



Trail Length = 5 Miles

